

# Sending Images To A Computer (Wi-Fi Function) (PowerShot S110)\_1

Sending images to a computer (Wi-Fi function) (PowerShot S110)

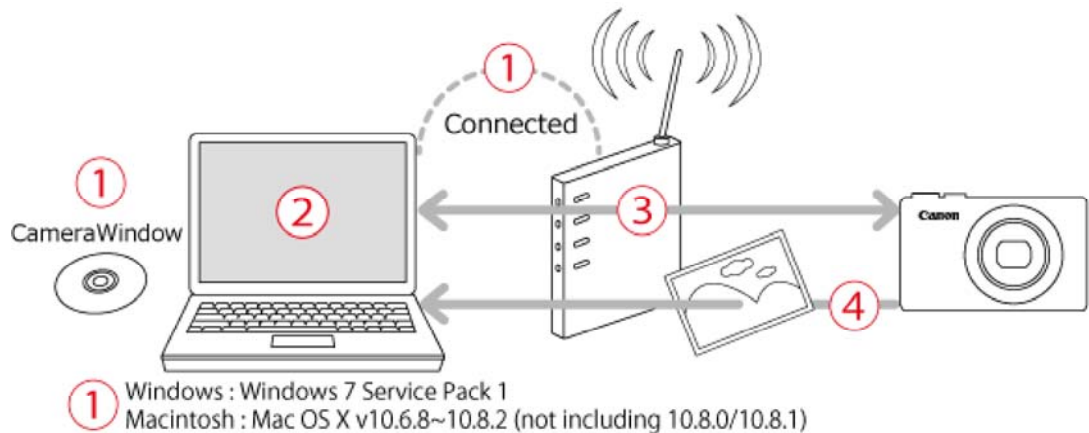
ID : 8201769400 \_ EN \_ 1

Solution

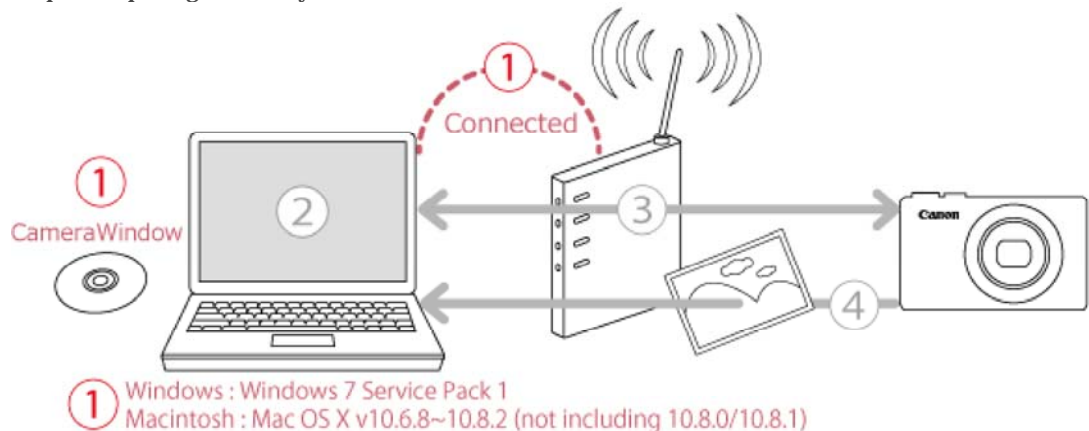
Getting started

The procedure for using the Wi-Fi function to send images from a camera to a computer is explained in the following four steps. Proceed in order from Step 1.

- ① Step 1: Preparing necessary items.
- ② Step 2: Setting up the computer.
- ③ Step 3: Connecting the camera to the computer
- ④ Step 4: Sending images to the computer.



Step 1: Preparing necessary items



1. Check the computer's requirements.

The camera can connect to the following computers via Wi-Fi:

- Windows: Windows 7 Service Pack 1
- Macintosh: Mac OS X v10.6.8 ~10.8.2 (not including 10.8.0/0.8.1)

IMPORTANT

- Windows 7 Starter and Home Basic editions are not supported.
- Windows 7 N (European version) and KN (South Korean version) require a separate download and install of Windows Media Feature Pack.

2. Confirm that an access point base unit (Wi-Fi router, etc.) is connected to the computer.
3. Make sure that the included CameraWindow software is installed.

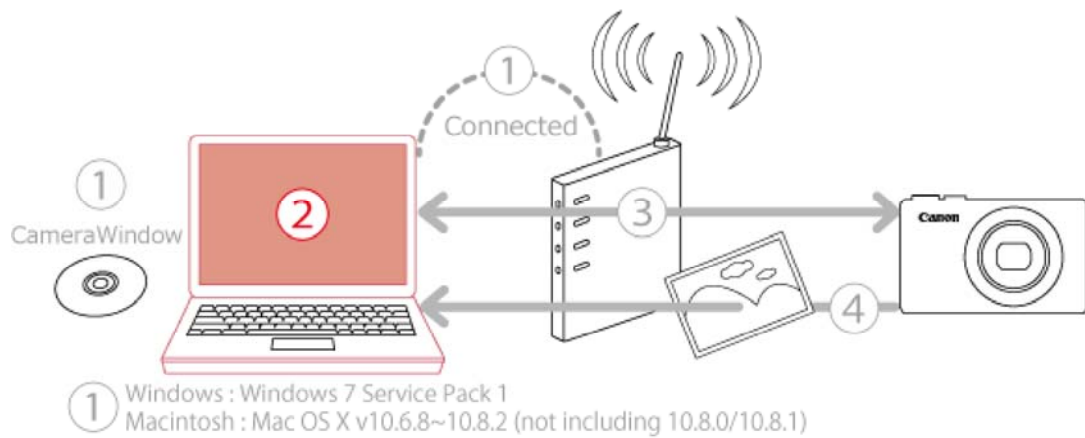
#### NOTE

- A router is a device that creates a network (LAN) structure for connecting multiple computers. A router that contains internal Wi-Fi function is called a Wi-Fi router.
- This page will refer to all Wi-Fi routers and base stations as "access points".
- When unsure of your computer setup, refer to the user manual provided with the computer.

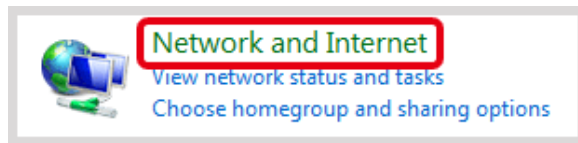
[Return to top](#)

#### Step 2: Setting up the computer (Windows only)

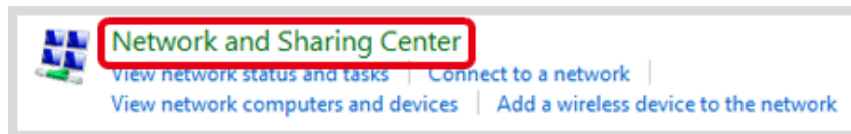
Even if your computer is connected to an access point, sending images from the camera to the computer requires changing the computer's settings. The procedure is explained below. Mac users, proceed to **Step 3: Connecting the camera to a computer**.



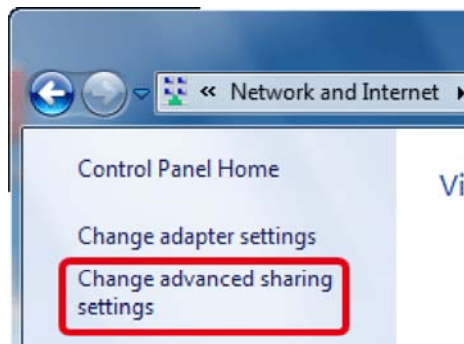
1. Click [Control Panel] from the Start menu.
2. Click [Network and Internet].



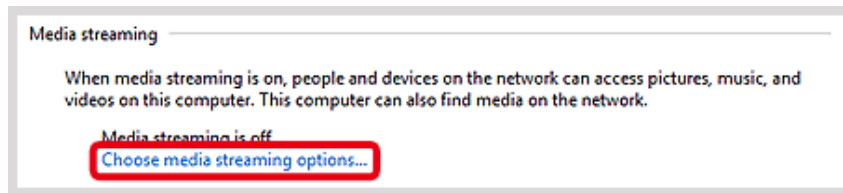
3. Click [Network and Sharing Center].



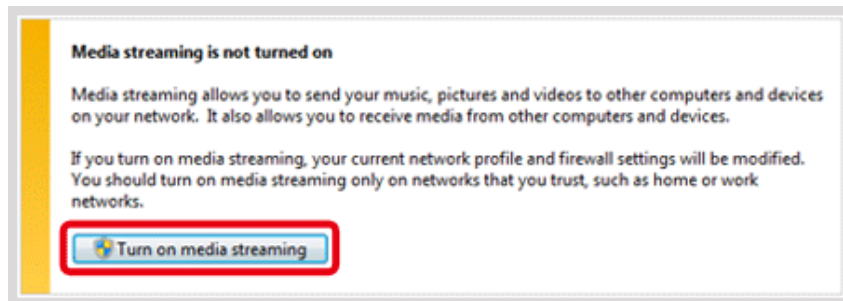
4. Click [Change advanced sharing settings].



5. Click the current profile for [Choose media streaming options...].



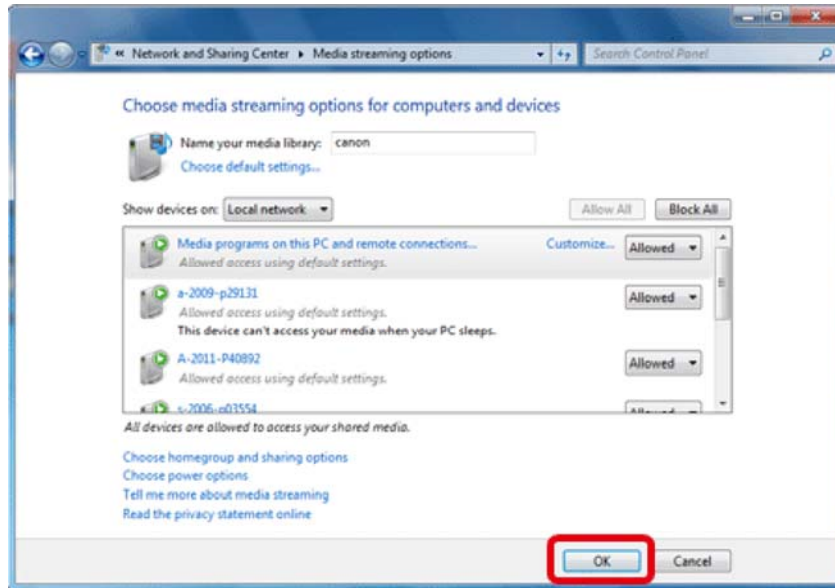
6. Click [Turn on media streaming].



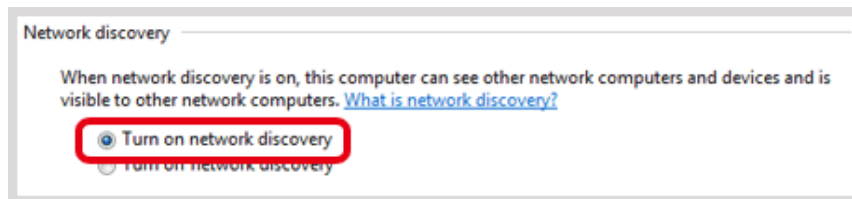
#### NOTE

- If media streaming is already active, proceed to 7.

7. Click [OK].



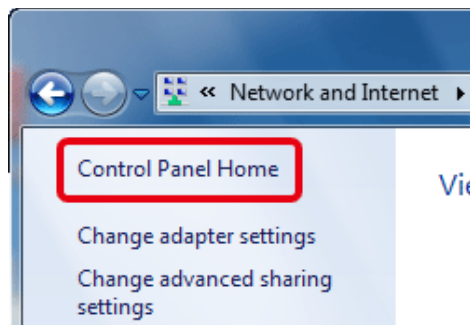
8. Click the current profile for [Turn on network discovery].



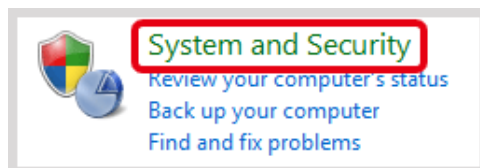
9. Click [Save changes].



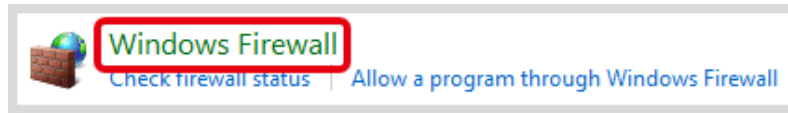
10. Click [Control Panel Home].



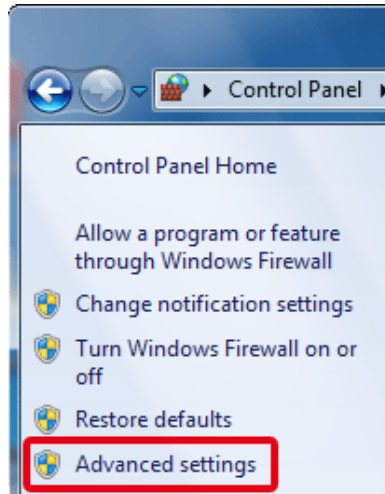
11. Click [System and Security].



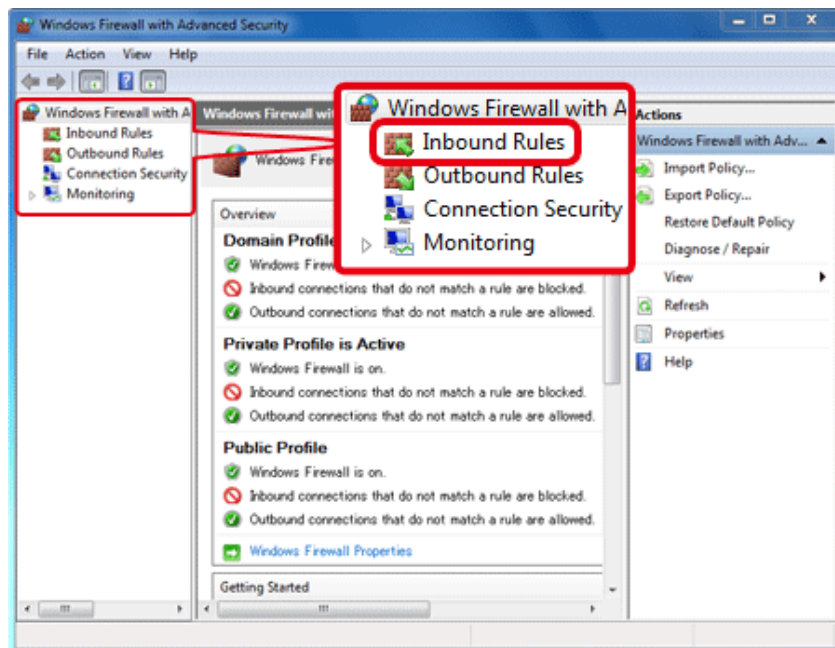
12. Click [Windows Firewall].



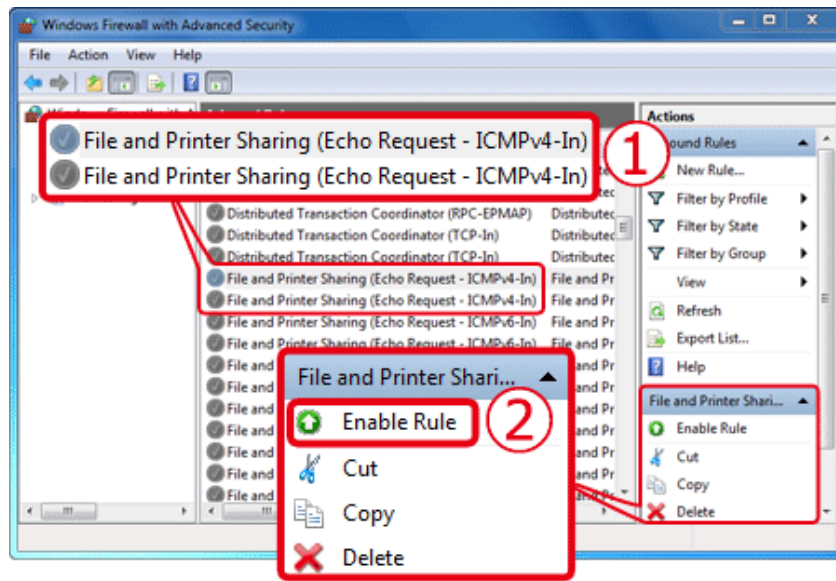
13. Click [Advanced settings].



14. Click [Inbound Rules].



- 15.
- ① Choose [File and Printer Sharing] items ending in [ICMPv4], and then click
  - ② [Enable Rule] on the right side of the window.

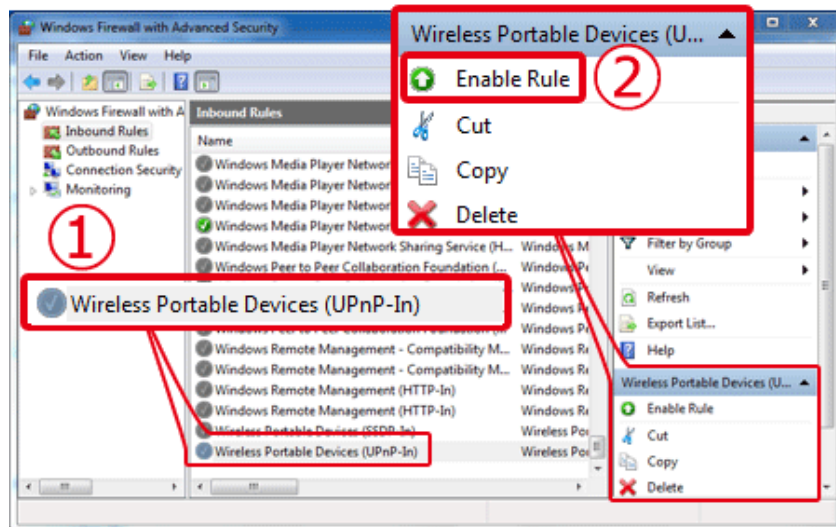


NOTE

- If [Disable Rule] is displayed, the item is already enabled, and can be left as is.

16.

- 1 Choose [Wireless Portable Devices (UPnP-In)], and then click
- 2 [Enable Rule] on the right side of the window.

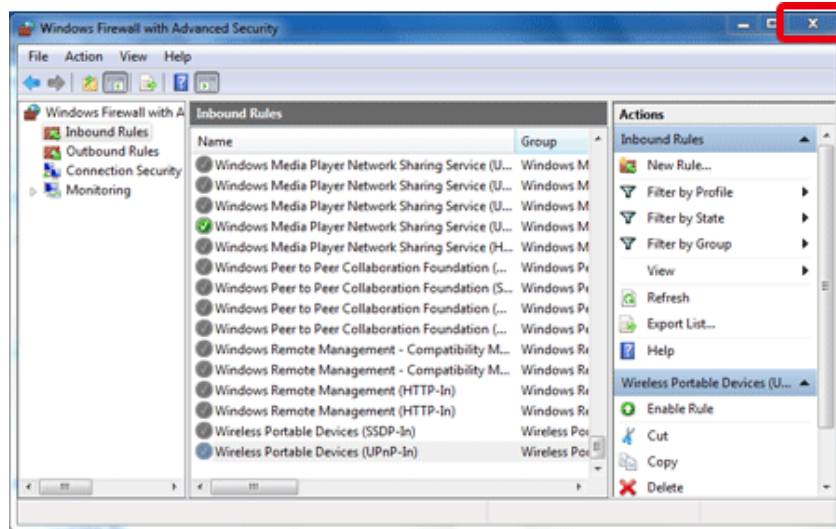


NOTE

If [Disable Rule] is displayed, the item is already enabled, and can be left as is.

17. Close the [Windows Firewall with Advanced Security] window.



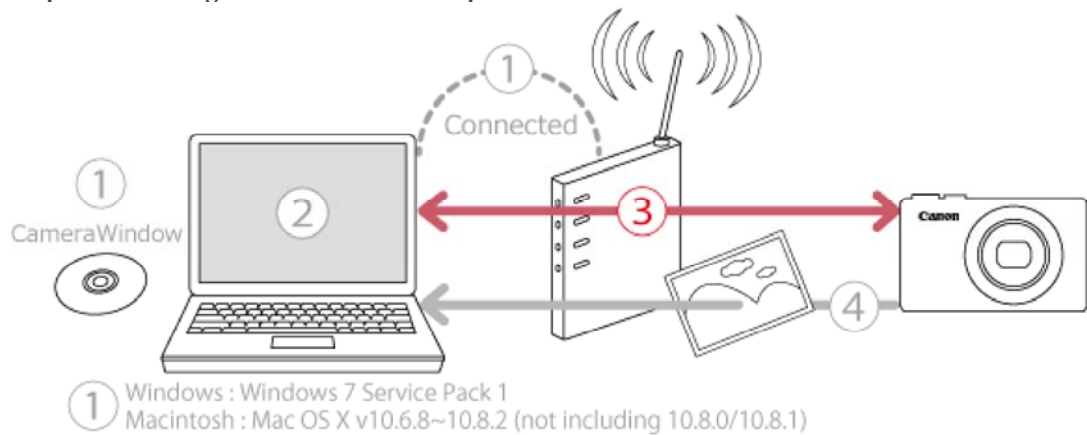



18. Close the Control Panel window.


This concludes the steps for connecting a computer to a wireless LAN.

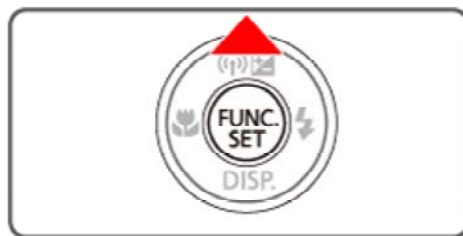
[Return to top](#)

Step 3: Connecting the camera to the computer



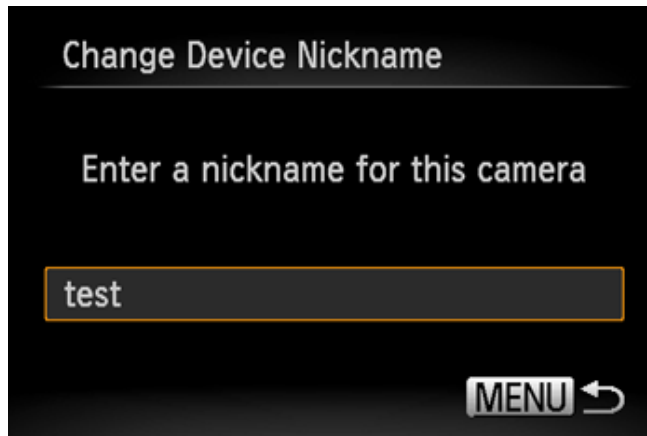
1. Press the <Playback> (  ) button on the camera.

2. Press the <Wi-Fi> (  ) button.



NOTE

When setting up Wi-Fi for the first time, the camera nickname registration screen will be displayed.



This nickname will be displayed on the screen of target devices when connecting to other devices via Wi-Fi. Touch within the frame and then enter a nickname (up to 16 letters and numbers) with the displayed keyboard

3. Press the <



> buttons to choose (



), and then press the <FUNC./SET> (



) button.



4. Press the <

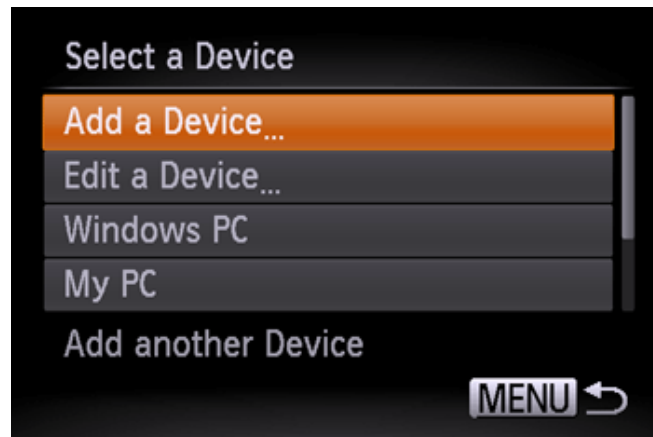


> buttons to choose [Add a Device], and then press the <FUNC./SET> (



) button.



**NOTE**

Once a computer is added, the computer name will be displayed on the screen in 4. To connect to a computer again, simply choose the computer name from the list.

5. A list of detected access points will be displayed in the [Access Point Connect] screen. Use the following method to connect with an access point.

**5AConnecting to a WPS Supported Access Point****5BConnecting to Access Points in the List****5CConnecting to an access point manually****NOTE**

- WPS (Wi-Fi Protected Setup) is a structure for simplifying settings when connecting one wireless LAN device to another. You can use either Push Button Configuration Method or PIN Method for settings on a WPS supported device. The push button configuration method is used in the following explanation.
- Refer to the user guide provided with your access point to check if it supports WPS.

**5AConnecting to a WPS Supported Access Point**

5A-1. Press the <



> < buttons to choose [WPS Connection], and then press the <FUNC./SET> (



) button.



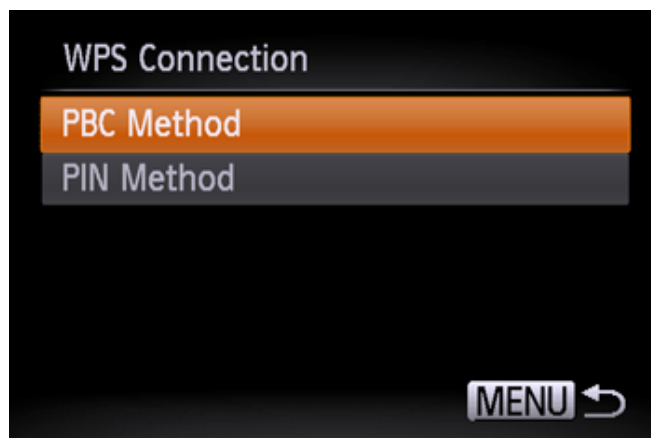
5A-2. Press the <



> buttons to choose [PBC Method], and then press the <FUNC./SET> (



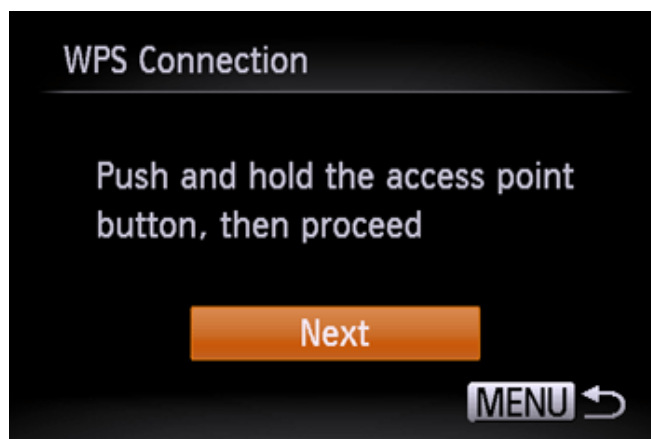
) button.



5A-3. On the access point, hold down the WPS connection button for a few seconds. On the camera, press the <FUNC./SET> (



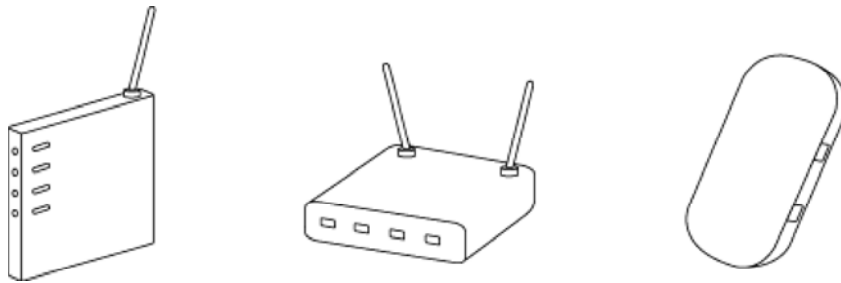
) button.



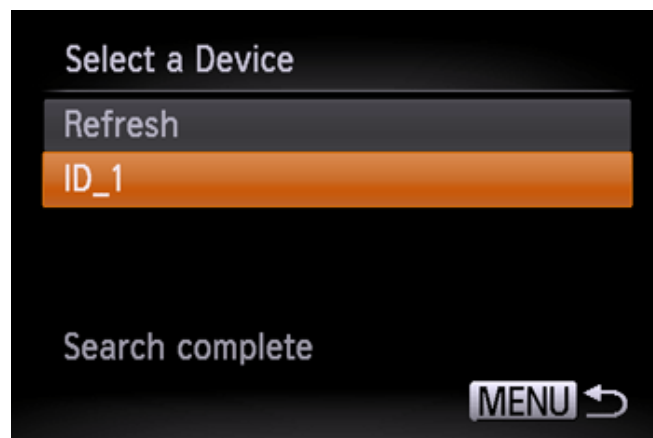
- The camera will connect to the access point.
- A list of computers connected to the access point will appear in the [Select a Device] screen.

**NOTE**

A WPS connection button is affixed to your access point (Wireless LAN, router, etc.). For further details on the location and how many seconds to press it, refer to the user guide included with your access point.



5A-4. When a connectible device is found, a screen like the one below will appear. Touch the name of the computer you want to connect with.



A screen like the one below will appear.



If you are using Mac or Windows with the drivers installed, the screen will turn off after the connection is terminated. Proceed to **Step 4: Sending images to a computer.**

For Windows users, when connecting your camera to your computer wirelessly for the first time, the display will not change during connection. Proceed to **6. Driver Installation.**

5BConnecting to Access Points in the List

5B-1. The access point's encryption key is necessary for connection. Refer to the user guide included with your access point to look up information on SSID, Network certificates, and security keys.

#### NOTE

- An encryption key (network key) is the key used when encrypting data during wireless transmission.



5B-2. Press the <



>>< buttons to choose a network (access point), and then press the <FUNC./SET> (  ) button.




5B-3.

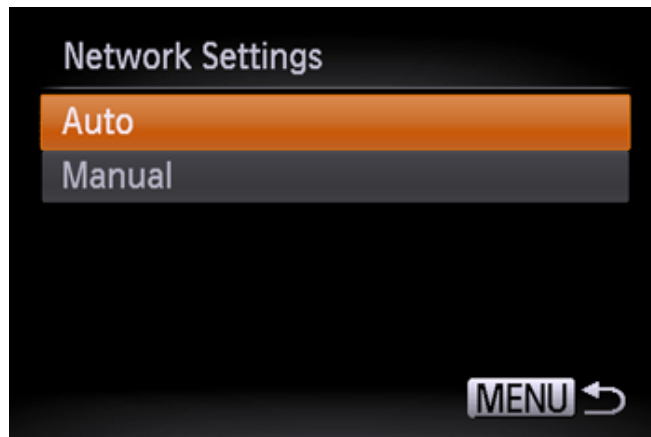
- 1 Press the <FUNC./SET> (  ) button to access the keyboard, and then enter the encryption key
- 2 Choose [Next] and press the <FUNC./SET> (  ) button.



5B-4. Press the <



>>< buttons to choose [Auto] and press the <FUNC./SET> (  ) button.



5B-5. A list of devices connected to the access point will appear on the screen.

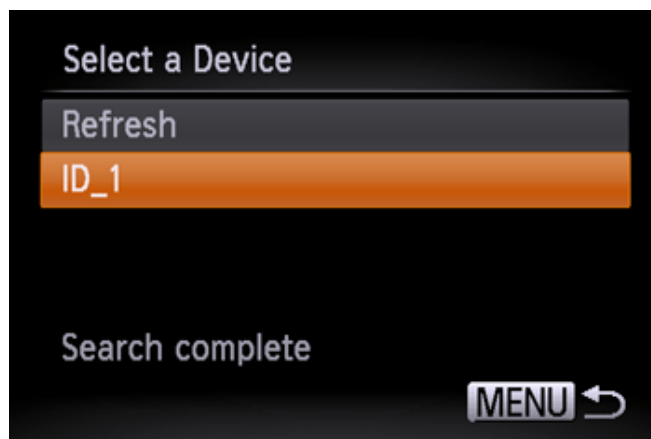
Press the <



> buttons to choose the name of the computer you want to connect to, and then press the <FUNC./SET> (



) button.



A screen like the one below will appear.



If you are using Mac or Windows with the drivers installed, the screen will turn off after the connection is terminated. Proceed to **Step 4: Sending images to a computer.**

For Windows users, when connecting your camera to your computer wirelessly for the first

time, the display will not change during connection.  
Proceed to **6. Driver Installation.**

5CConnecting to an access point manually.

5C-1. The access point`s SSID, security method, and encryption key are all necessary for connection. Refer to the user guide included with your access point to look up information on SSID, Security method/encryption method, and security keys.

#### NOTE

- SSID-Numbers and letters used to identify a specific existing access point. This is also called the "access point name" or "network name".
- Security method/encryption method is the method for encrypting data during wireless transmission.
- Encryption key (network key) is the key used when encrypting data during wireless transmission.

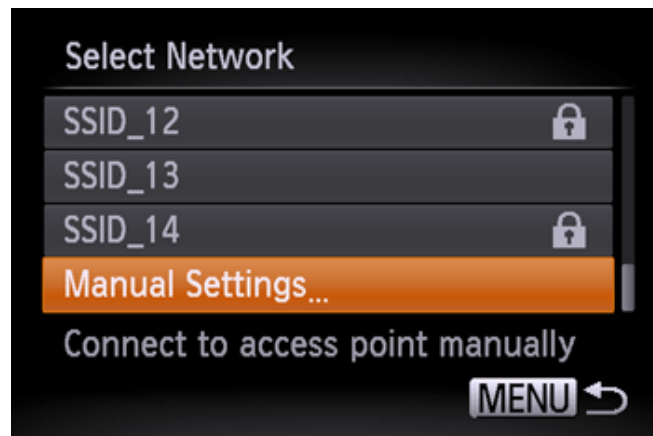
5C-2. Press the <





>><< buttons to choose [Manual Settings] and press the <FUNC./SET> (



) button.

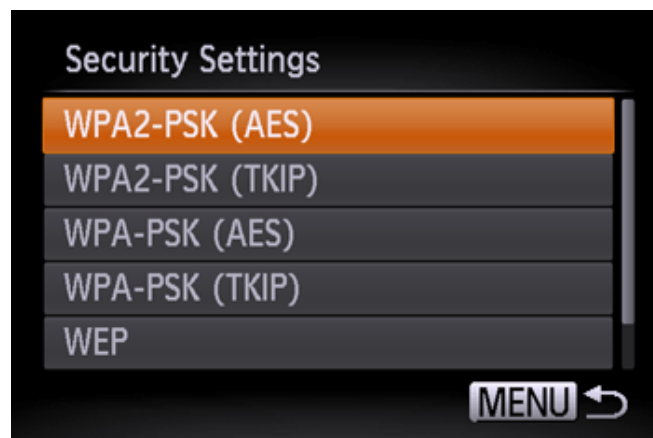


5C-3.



- ① Press the <FUNC./SET> (  ) button and enter the SSID key on the displayed keyboard.
- ② Choose [Next] and press the <FUNC./SET> (  ) button.



5C-4. Choose the Security method/encryption method.




5C-5.

- ① Press the <FUNC./SET> (  ) button to access the keyboard, and then enter the encryption key.
- ② Choose [Next], and then press the <FUNC./SET> (  ) button.

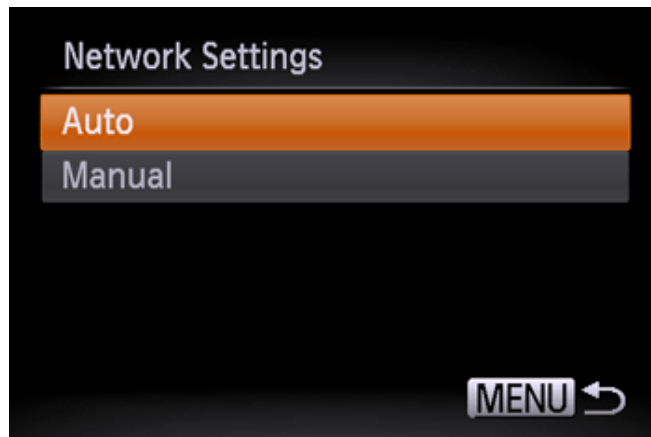



5C-6. Press the <

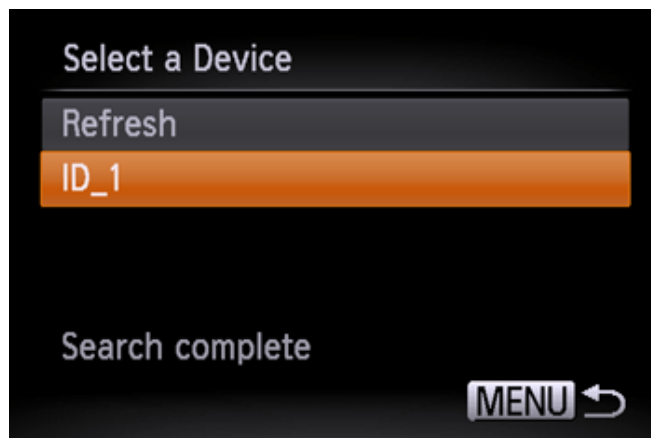


- >> buttons to choose [Auto], and then press the <FUNC./SET> (  ) button.





5C-7. When a device is found, a screen like the following will appear. Choose the name of the computer you want to connect to, and then press the <FUNC./SET> (  ) button.



A screen like the one below will appear.



If you are using Mac or Windows with the drivers installed, the screen will turn off after the connection is terminated. Proceed to **Step 4: Sending images to a computer.**

For Windows users, when connecting your camera to your computer wirelessly for the first time, the display will not change during connection. Proceed to **6. Driver Installation.**

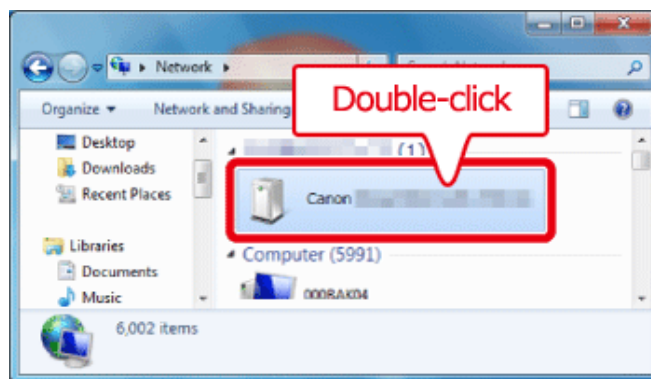
**6. Driver Installation (Windows Only)**

When wirelessly connecting the camera to a computer for the first time, it is necessary to install the drivers using the following procedure (Windows Only).

7. Make sure the below screen appears on the camera's display.



When the above screen is displayed, click the computer's Start menu and choose [Control Panel], [Network and Internet], [View network computers and devices], and then choose the connected camera from [Other Devices] and then double click the camera icon. Driver installation will begin.

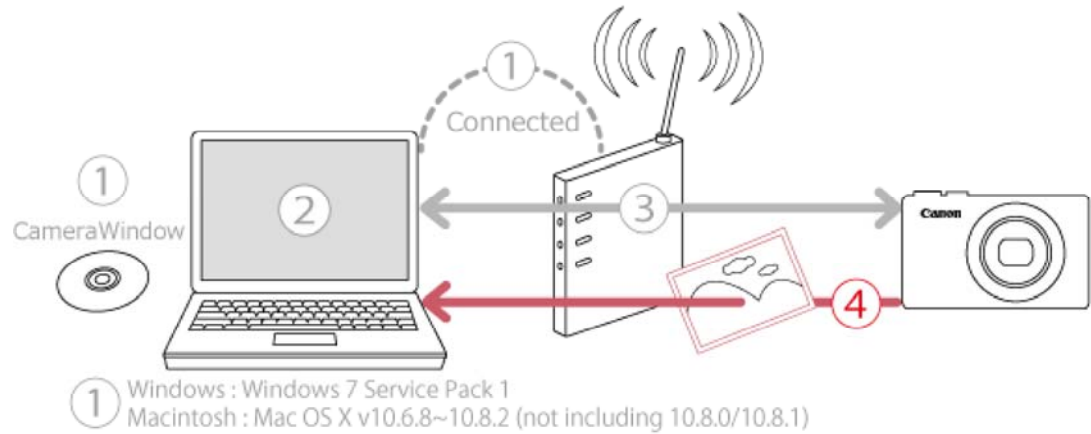


8. After driver installation is complete, and the camera and computer connection is enabled, the AutoPlay screen will be displayed. Nothing will be displayed on the camera screen. Click [Download Images From Canon Camera].

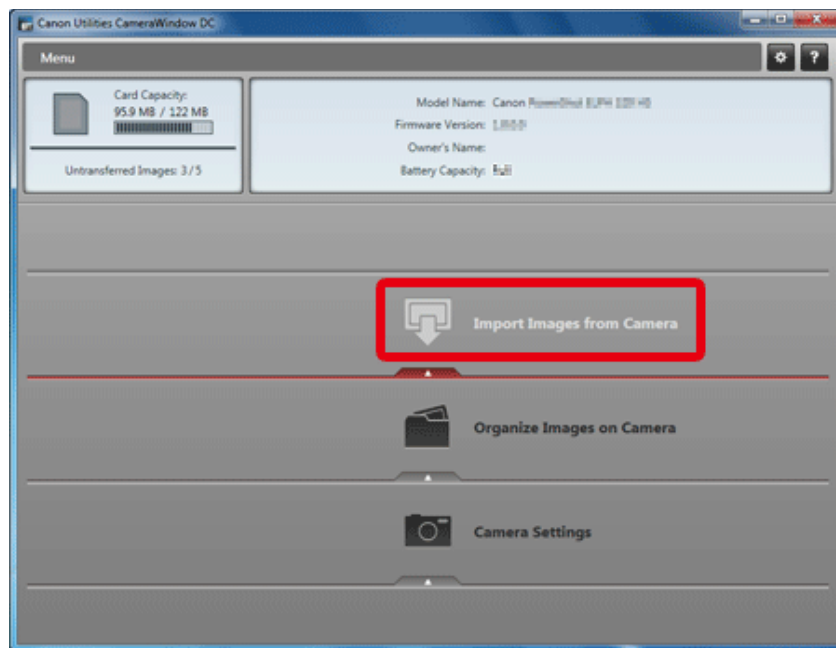


[Return to top](#)

#### Step 4: Sending images to the computer

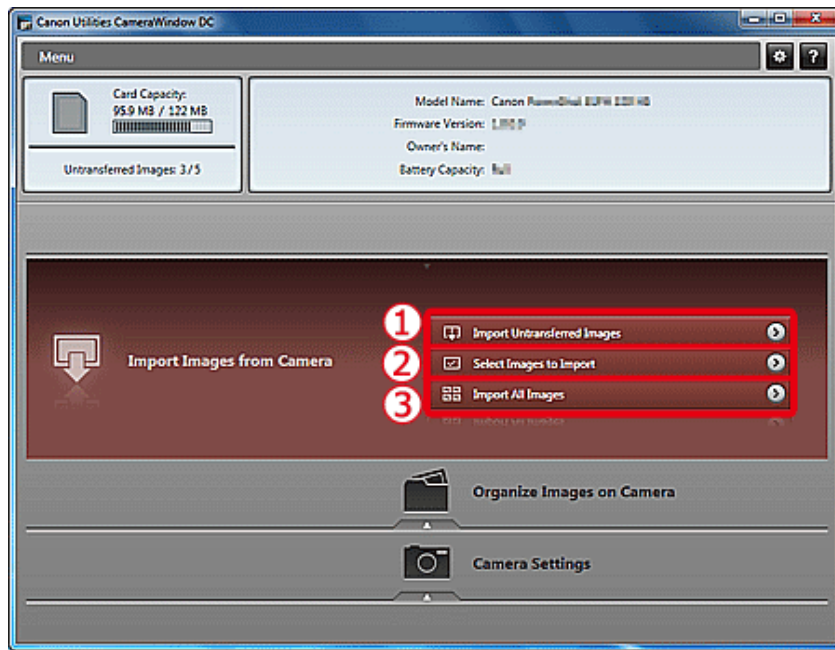



1. The CameraWindow menu window will be displayed, so click [Import Images from Camera].



2. A window like the one shown below will appear, so click

- ① [Import Untransferred Images],
- ② [Select Images to Import], or
- ③ [Import All Images].



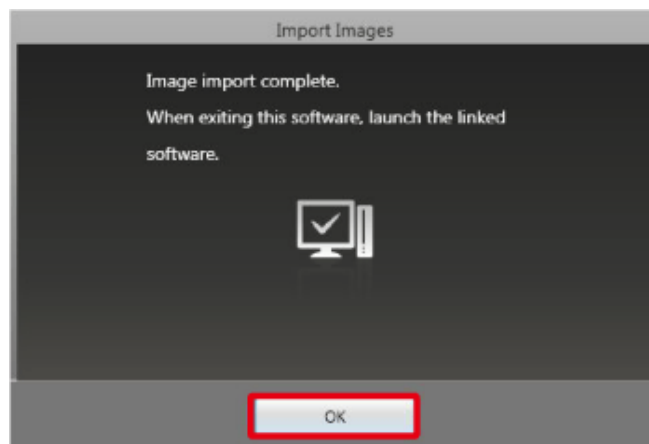
3. If you chose [Select Images to Import] in Step 2,  
① select the images you want to import, and then click  
② [Import] (  ).




4. The following window will appear, and the computer will start to transfer images from the camera.



5. Click [OK].



#### NOTE

- Click the (  ) button to close this window. A related application ([ImageBrowser EX] by default) will start automatically and the imported images are displayed.
- CameraWindow default settings will save images to the Pictures or My Pictures folders on a computer.
- Movies will take longer to import since the file size is larger than still images.
- To disconnect from the camera, turn off the camera.

[Return to top](#)